

FIRE MAGIC OUTDOOR GAS BARBECUES

LIMITED WARRANTY

LIFETIME WARRANTY – Fire Magic Cast Stainless Steel Burners, Stainless Steel Rod Cooking Grids and Stainless Steel Housings (including liners, frames, ovens and barbecue faces) are warranted for as long as you own your Fire Magic Barbecue.

FIFTEEN YEAR WARRANTY – Fire Magic Brass Burners, Brass Valves, Backburner Assemblies (except ignition parts), Manifold Assemblies and Porcelain Housings (including liners, frames, ovens and barbecue faces) are warranted for 15 years from the date of purchase.

THREE YEAR WARRANTY – Fire Magic Sideburners and all other Fire Magic Barbecue components (except ignition systems) are warranted for 3 years from the date of purchase.

Fire Magic ignition systems and barbecue accessories are warranted for one year from the date of purchase.

This warranty applies to the original purchaser with invoice or proof of purchase and covers Fire Magic products intended for personal, family or household usage only. It does not apply to rust, corrosion, oxidation or discoloration, which may occur due to moisture or overheating, unless the affected component becomes inoperable. This warranty does not cover parts becoming defective by misuse, accidental damage, improper handling and/or installation. It does not cover labor or labor related charges. It specifically excludes liability for indirect, incidental or consequential damages. Some states do not allow the exclusion or limitation of incidental or consequential damages, so the above exclusion or limitation may not apply to you. This warranty gives you specified legal rights and you may have other rights which may vary from state to state.

For additional information regarding this warranty, or information on how to place a warranty claim, contact your authorized Fire Magic dealer or the Robert H. Peterson Co.

Fire Magic Barbecues are manufactured by:

Robert H. Peterson Co.
14724 E. Proctor Ave.
City of Industry, CA 91746
www.rhpeterson.com

Please keep a copy of your sales slip for proof of purchase.

ROBERT H. PETERSON COMPANY

YOUR NAME _____ DATE OF _____

ADDRESS _____ PURCHASE _____

CITY _____ STATE _____ ZIP _____

DEALER WHERE YOU PURCHASED YOUR BARBECUE? _____

CITY _____ STATE _____

HOW DID YOU HEAR ABOUT FIRE MAGIC BBQ'S? FRIEND NEWSPAPER AD

STORE INTERNET OTHER (PLEASE EXPLAIN) _____

INSTALLED BY SELF DEALER OTHER _____

MODEL NO. _____ **SERIAL No** _____

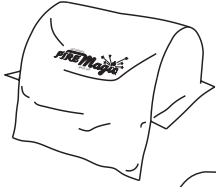
USED WITH NAT. GAS L.P. (BOTTLED) GAS

WHY DID YOU PURCHASE A FIRE MAGIC? - ADDITIONAL COMMENTS ABOUT THE PRODUCT, STORE, SALES PERSON, INSTALLER, ETC. _____

Fire Magic[®]

The Ultimate Barbecue

ACCESSORIES



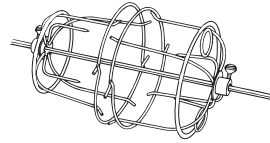
NYLON COVERS



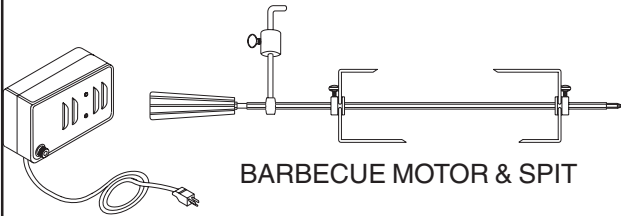
TURKEY POT



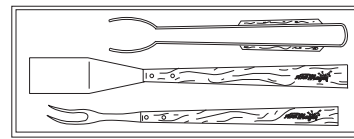
WOK



TURKEY &
CHICKEN HOLDERS



BARBECUE MOTOR & SPIT



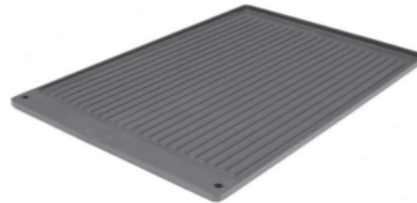
BARBECUE TOOL SET



STAINLESS STEEL
GRID COVERS



CLEANERS



DOUBLE SIDED
GRIDDLE

"Outdoor Cooking at it's Best!"

PLACE
STAMP
HERE

POST CARD

ROBERT H. PETERSON COMPANY
14724 EAST PROCTOR AVENUE
CITY OF INDUSTRY, CA 91746-3202

